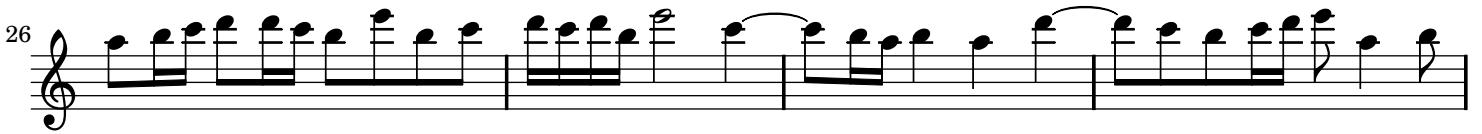
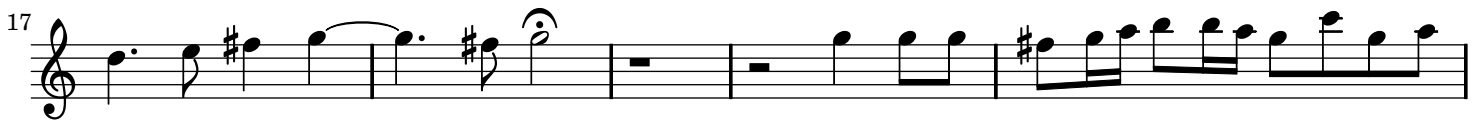
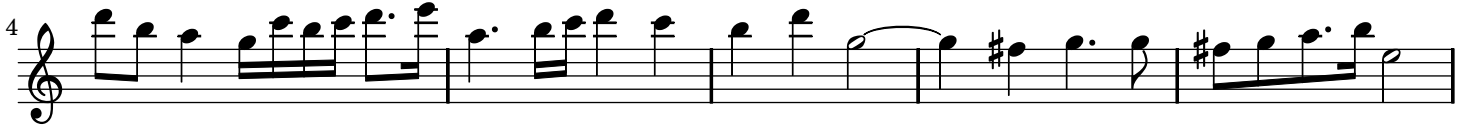


Fuga in G Major (BuxWV 175)

Guitar One

Buxtehude (Arr. By Alan Lewis)



Musical score for a single melodic line, measures 43-62. The score is written on five staves, each beginning with a treble clef and a key signature of one sharp (F#). The notation includes various rhythmic values such as eighth, sixteenth, and thirty-second notes, as well as rests and accidentals. Measure 43 starts with a quarter note followed by a series of eighth notes. Measure 47 features a sharp sign before the first note. Measure 51 includes a series of beamed sixteenth notes. Measure 57 has a sharp sign before the first note. Measure 62 begins with a quarter note followed by a series of eighth notes. The score concludes with a final note in measure 62.